

# Tangential Flow Full-Cone Spray Nozzles

## Spadflow Series 3L 422 – 3L 423



3L 422  
3L 423

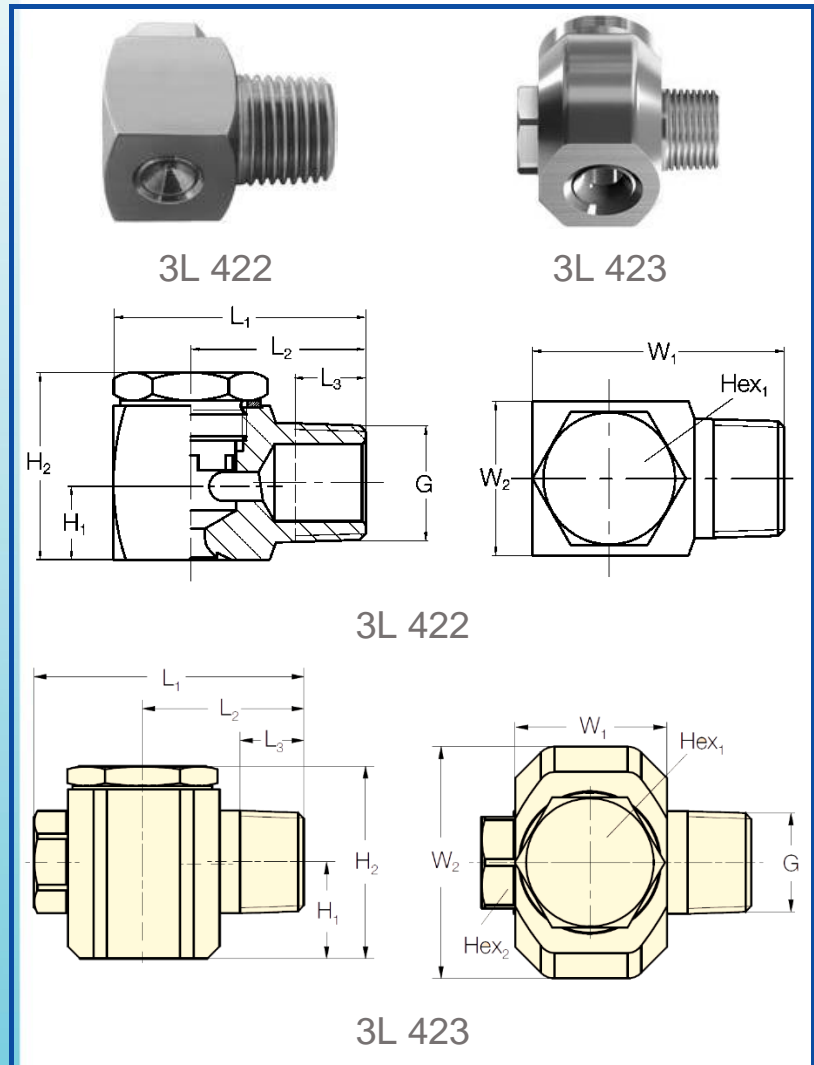
### Tangential Full-Cone Nozzle

#### Applications:

- Cleaning and washing processes
- Cooling of gaseous fluids and solids
- Surface spraying
- Spraying onto mats in air washers
- Improving on chemical reactions
- Continuous casting
- Foam control

#### Properties:

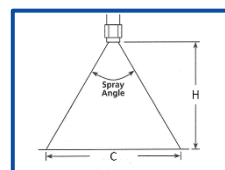
- Tangentially arranged liquid supply
- Without swirl inserts
- Non-clogging
- Stable spray angle
- Uniform spray



Conn. code	Dimensions [mm]										Weight 316L SS
	G	L <sub>1</sub>	L <sub>2</sub>	L <sub>3</sub>	H <sub>1</sub>	H <sub>2</sub>	W <sub>1</sub>	W <sub>2</sub>	Hex <sub>1</sub>	Hex <sub>2</sub>	
014	1/4 BSPT	28.0	20.0	9.7	8.0	21.0	15.6	16.0	11	-	44 g
038	3/8 BSPT	36.0	25.0	10.1	11.0	26.7	23.2	22.0	19	-	101 g
012	1/2 BSPT	56.0	33.5	13.2	20.0	40.0	32.0	48.0	27	19	370 g
034	3/4 BSPP	65.5	38.5	14.5	23.5	57.0	40.0	63.0	36	27	830 g
100	1 BSPP	85.0	48.5	16.8	27.3	66.0	55.0	78.0	41	36	1,581 g

Material*	Code
Brass	1
S.S.304	2
S.S.316	3

α	C [mm] (range)
	@ H=200 mm
60°	225
90°	380-390
120°	680



For higher lengths:  $C_2 = \frac{C \times H_2}{200}$

Order No.: CODE . CONNETION . MATERIAL

Example.: 3L 422 64 . 060 . 038 . 2 Type 3L 422 with mentioned Q(lpm)@P(bar), Spray angle: 60°, 3/8", S.S.316

## Tangential Flow Full-Cone Spray Nozzles Spadflow Series 3L 422 – 3L 423



Spray angle (α)	Code	Connection** [inch]	B Ø [mm]	E Ø [mm]	Flow rate [l/min]					
					P [bar]					
					0.5	1.0 <i>K factor</i>	2.0	3.0	5.0	10.0
60°	3L 422 64 . 060	3/8"	3.00	3.00	2.00	2.83	<b>4.00</b>	4.90	6.32	8.94
	3L 422 40 . 090	1/4"	1.40	1.40	0.50	0.71	<b>1.00</b>	1.22	1.58	2.24
90°	3L 422 48 . 090	1/4"	1.85	1.85	0.80	1.13	<b>1.60</b>	1.96	2.53	3.58
	3L 422 56 . 090	1/4"	2.25	2.25	1.25	1.77	<b>2.50</b>	3.06	3.95	5.59
	3L 422 60 . 090	3/8"	2.55	2.55	1.57	2.23	<b>3.15</b>	3.86	4.98	7.04
	3L 422 64 . 090	3/8"	2.90	2.90	2.00	2.83	<b>4.00</b>	4.90	6.32	8.94
	3L 422 72 . 090	3/8"	3.70	3.70	3.15	4.45	<b>6.30</b>	7.72	9.96	14.09
	3L 422 76 . 090	3/8"	4.15	4.15	4.00	5.66	<b>8.00</b>	9.80	12.65	17.89
	3L 422 80 . 090	3/8"	4.65	4.65	5.00	7.07	<b>10.00</b>	12.25	15.81	22.36
	3L 422 84 . 090	3/8"	5.30	5.30	6.25	8.84	<b>12.50</b>	15.31	19.76	27.95
	3L 422 88 . 090	3/8"	5.85	6.00	8.00	11.31	<b>16.00</b>	19.60	25.30	35.78
	3L 422 96 . 090	1/2"	8.00	8.00	12.50	17.68	<b>25.00</b>	30.62	39.53	55.90
120°	3L 422 48 . 120	1/4"	1.90	1.90	0.80	1.13	<b>1.60</b>	1.96	2.53	3.58
	3L 422 56 . 120	1/4"	2.45	2.40	1.25	1.77	<b>2.50</b>	3.06	3.95	5.59
	3L 422 60 . 120	3/8"	2.70	2.70	1.57	2.23	<b>3.15</b>	3.86	4.98	7.04
	3L 422 72 . 120	3/8"	4.00	3.90	3.15	4.45	<b>6.30</b>	7.72	9.96	14.09
	3L 422 80 . 120	3/8"	4.90	4.90	5.00	7.07	<b>10.00</b>	12.25	15.81	22.36
	3L 422 84 . 120	3/8"	5.30	5.30	6.25	8.84	<b>12.50</b>	15.31	19.76	27.95
	3L 422 88 . 120	3/8"	6.60	6.00	8.00	11.31	<b>16.00</b>	19.60	25.30	35.78
	3L 422 92 . 120	1/2"	7.30	7.30	10.00	14.14	<b>20.00</b>	24.49	31.62	44.72
	3L 422 96 . 120	1/2"	8.00	8.00	12.50	17.68	<b>25.00</b>	30.62	39.53	55.90
	3L 423 00 . 120	1/2"	8.70	8.70	15.75	22.27	<b>31.50</b>	38.88	49.81	70.44
3L 423 12 . 120	3/4"	12.70	12.30	31.50	44.55	<b>63.00</b>	77.16	99.61	140.87	
3L 423 20 . 120	1"	17.00	16.00	50.00	70.71	<b>100.00</b>	122.47	158.11	223.61	

\* Different materials are available upon request

\*\* Different connection sizes are available upon request

B = bore diameter      E = narrowest free cross section

Order No.: CODE . CONNETION . MATERIAL

Example.: 3L 422 64 . 060 . 038 . 2      Type 3L 422 with mentioned Q(lpm)@P(bar), Spray angle: 60°, 3/8", S.S.316